

TEL: (858) 621-2700
 URL: www.zcomm.com
 EMAIL: applications@zcomm.com

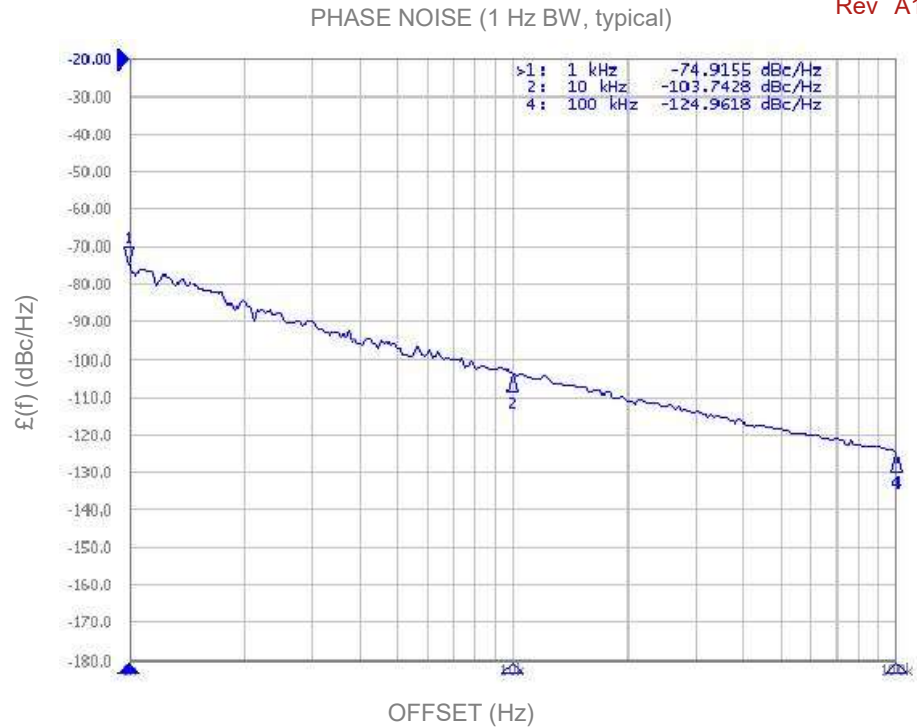
Voltage-Controlled Oscillator Surface Mount Module

Applications

Test Equipment
 Satellite Communications
 Radar Systems

Application Notes

AN-101: Mounting and Grounding
 AN-102: Output Loading
 AN-107: Manual Soldering



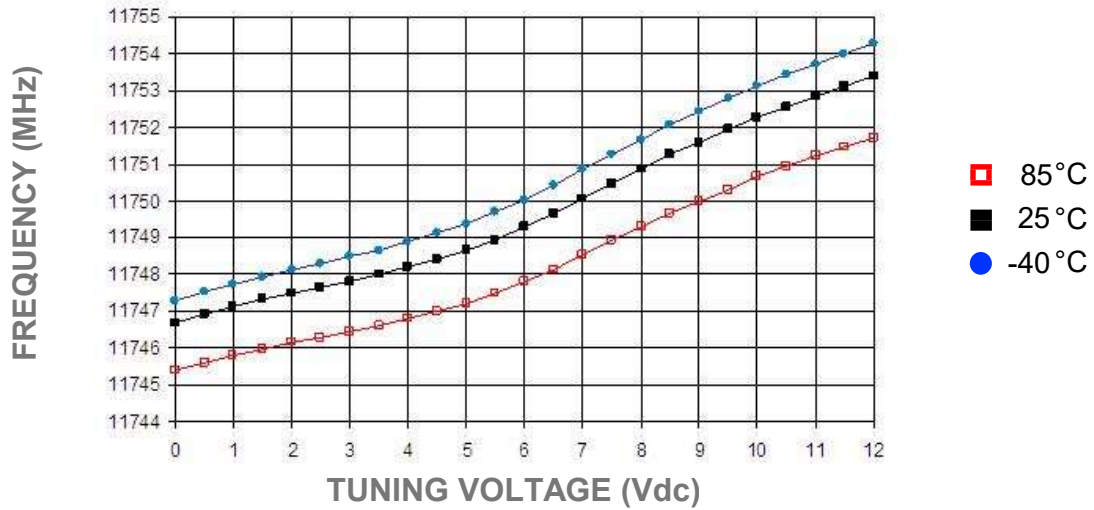
| Performance Specifications | Min | Typ | Max | Units |
|---------------------------------------|-------|------|-------|--------------------|
| Oscillation Frequency Range | 11750 | | 11750 | MHz |
| Phase Noise @ 10 kHz offset (1 Hz BW) | | -104 | | dBc/Hz |
| Harmonic Suppression (2nd) | | -30 | -25 | dBc |
| Tuning Voltage | 0 | | 12 | Vdc |
| Tuning Sensitivity (avg.) | | 0.5 | | MHz/V |
| Power Output | -3 | 0 | 3 | dBm |
| Load Impedance | | 50 | | Ω |
| Input Capacitance | | | 50 | pF |
| Pushing | | | 1 | MHz/V |
| Pulling (dB Return Loss, Any Phase) | | | 1.5 | MHz |
| Operating Temperature Range | -40 | | 85 | $^{\circ}\text{C}$ |
| Package Style | | SDRO | | |

| Power Supply Requirements | Min | Typ | Max | Units |
|----------------------------|-----|-----|-----|-------|
| Supply Voltage (Vcc, nom.) | | 5 | | Vdc |
| Supply Current (Icc) | | 23 | 26 | mA |

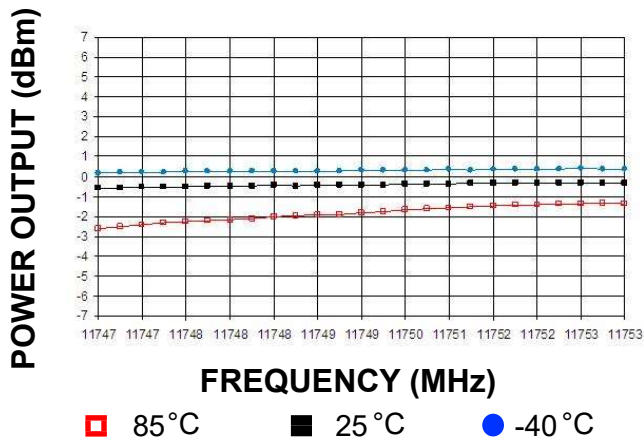
Additional Notes

It is not recommended to solder the ground plane under the DRO. Only the outside castellations shall be soldered.

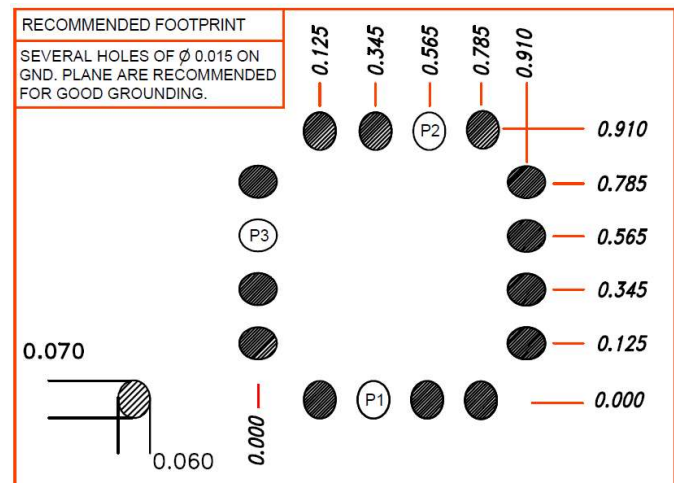
Tuning Curve, typ.



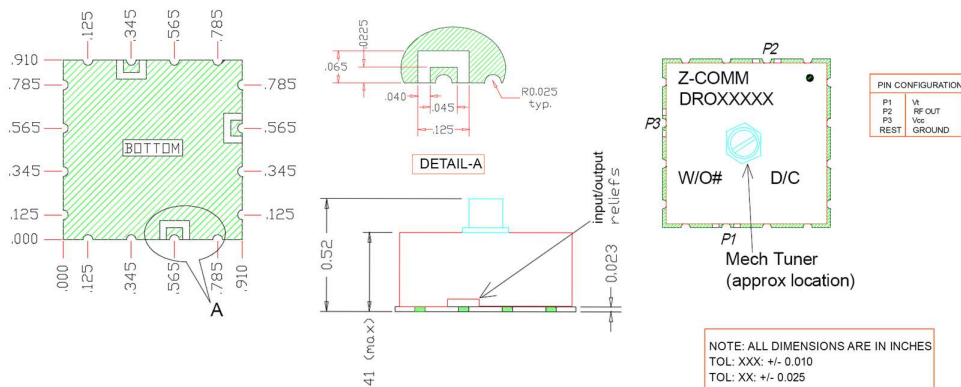
Power Curve, typ.



Footprint



Physical Dimensions



Note: It is not recommended to solder the ground plane under the DRO. Only the outside castellations require soldering for assembly.

LFSuffix = RoHS Compliant. All specifications are subject to change without notice.